

MINI-MANTIS II

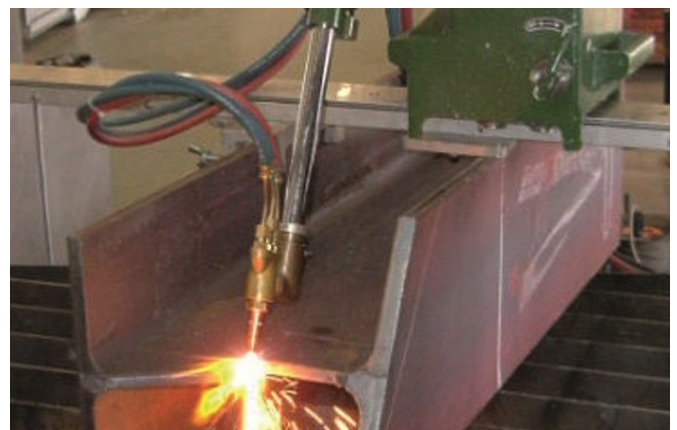
H-Beam Cutting Machine

Features and Benefits

- **Three rail types**
Makes web and flange cutting easy and efficient.
- **Adjustable rail and rack bar angle**
Allows diagonal cuts on web and flange
- **Flame pre-set function**
Set preheat only once; saves time and gas
- **4-Way jog direction control**
Controls both flange and web cutting with one direction switch
- **Long flange bar option**
For cutting of longer flanges up to 700 mm
- **Lightweight and portable**
The body and vertical units weigh 15kg; easy to carry and use in tight spaces

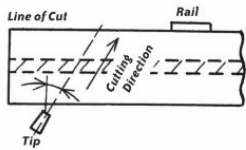
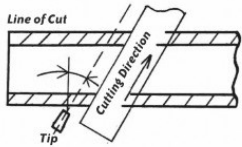
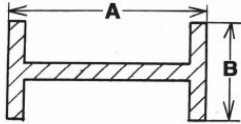
The **Mini-Mantis II** is a semi-automatic gas cutting unit for rapid and precise cutting of H-beam web and flange.

KOIKE's quality construction, ensuring durability and trouble-free operation, and you have an economical, efficient, compact gas cutting machine for H-beam steel.



Semi-automated H-beam cutting

Ideal for various types of H-beam steel



The **Mini-Mantis II** provides high-precision diagonal cuts that are clean and sharp. Two motors drives the torch for both web and flange cutting. No need to turn and mark the workpiece.

Right angle cutting capacity

■ Web cutting ("A" in the diagram)

150 - 600 mm: 600-ST rail

150 - 900 mm: 900-ST rail

900 - 1500 mm: 1500-ST rail

■ Flange cutting ("B" in the diagram)

150 - 400 mm: Standard

150 - 700 mm: With optional Slide bar 1200L

Diagonal cutting capacity

- 30 degrees maximum for both web and flange cutting.

Accessories

Optional accessories

Accessory	Stock #	Description
600-ST rail	90234	600mm effective cutting , rail lengths 1100 mm
900-ST rail	90235	900 mm effective cutting , rail lengths 1400 mm
1500-ST rail	90136	1500 mm effective cutting, rail lengths 2100 mm
Slide bar 1200L	32027	700 mm vertical stroke for flange cutting
Transformer AC230V - 110V	90100	For 110V models

Type and Specification

Specification

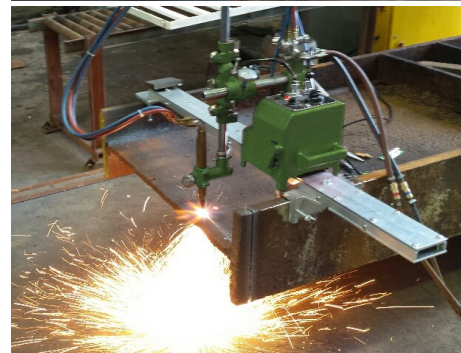
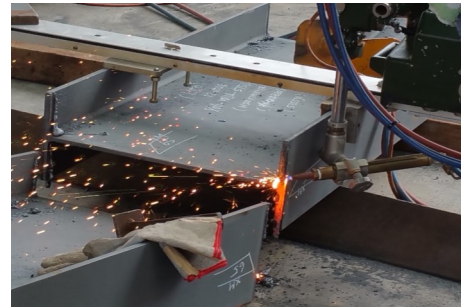
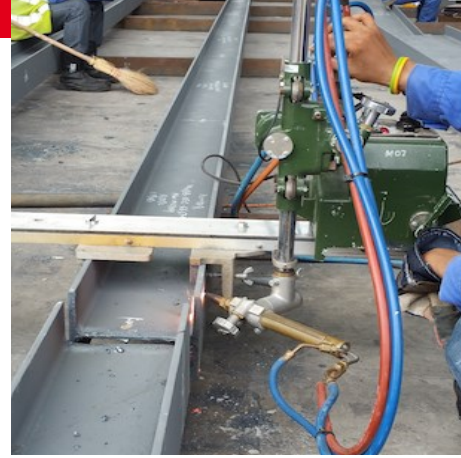
	Mini-Mantis II ST Set
Cutting thickness	5 - 30 mm
Cutting speed	100 - 700 mm
Bevel angle	0 ~ 35°
Speed control	Dial operation
Driving method	Web: Friction roller Flange: Rack and Pinion
Input power	AC 110V
Dimension (incl. vertical unit)	L350 x W350 x H880 mm
Weight	15 kg

Types

Model	Stock #
Mini-Mantis II ST 110V Set	90131

Scope of delivery

Scope of delivery
Machine body
ST-400 Vertical unit with torch unit
Power cable
Standard tool set
Operation manual
Cutting nozzles





KOIKE Portable Machines and Gas Equipment v.1.04 © 2016 Koike Europe B.V. Technical changes as well as errors and printing mistakes are reserved. 11/2016

Headquarter:

Koike Europe B.V.

Grote Tocht 19
1507 CG Zaandam
The Netherlands

Tel +31-(0)75 - 612 - 7227
Fax +31-(0)75 - 670 - 2271
info@koike-europe.com
www.koike-europe.com

Koike Europe B.V.

Germany Branch Office

Im Löchel 2
35423 Lich-Eberstadt
Deutschland

Tel +49-(0)6004 - 91 - 6930
Fax +49-(0)6004 - 91 - 6931- 01
info.germany@koike-europe.com
www.koike-europe.com

Koike France S.a.r.l.

Espace Mercure
Z.A.E. Les Dix Muids
59770 Marly
France

Tel +33-32730-4343
Fax +33-32730-1250
info@koike-europe.com
www.koike-europe.com

Koike Italia Srl

Via Papa Giovanni XXIII, n 45
20090 - RODANO (MILANO)
Italy

Tel +39-02953 - 28 - 717
Fax +39-02739 - 60 - 447
info@koike-europe.com
www.koike-europe.com

Koike Middle East FZE

SAIF Zone Sharjah-UAE
P.O. Box 122978
United Arab Emirates

Mobile +971561177615 /
+971566453803
Fax +9716-5312805
b.pandey@koike-europe.com
www.koike-europe.com